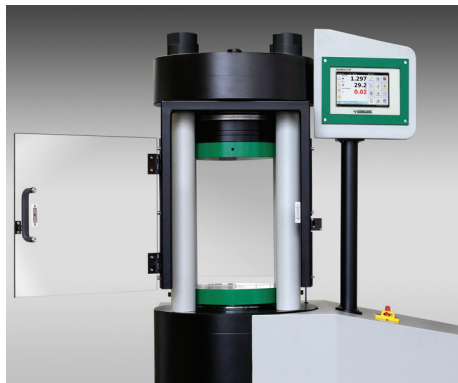


Choose the Original
Choose Success!



BASIC-LINE

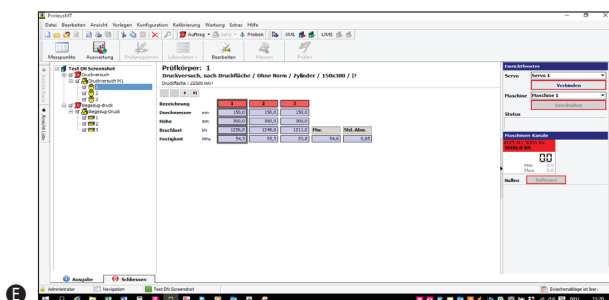
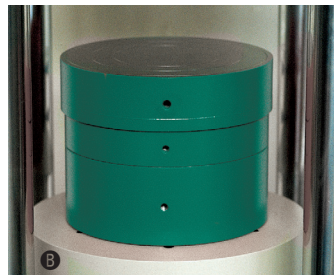
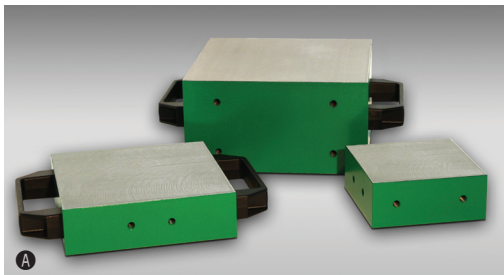
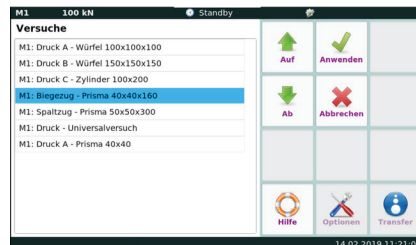
Hardened concrete test EN12390-3

Compression Testing Machine BETA 5-3000 AD

- accuracy acc. to DIN EN ISO 7500-1, class 1
- execution acc. to EN 12390-4 (straintest execution)
- for the determination of compressive strengths acc. to EN 12390-3, EN 12504-1, EN 206
- automatic load increase via digital controller **DIGIMAXX® C-44** bypass-control for constant load increase controllable as ramp function between 0.1–50 kN/s

Technical Data

- test load max.: 3000 kN
- measuring range: 120 ... 3000 kN
- display area: 0 ... 3000 kN
- test area height: 330 mm
- piston stroke: 50 mm
- upper pressure plate: Ø 300 mm
- lower pressure plate: 210 x 210 mm
- working height: 820 mm
- thickness of pressure plates: 40 mm
- hardness of pressure plates: 53 - 55 HRC
- inner width of test frame
from left to right (width): 230 mm
front to back (depth): 175 mm
- compact design
- with machine base for hydraulics and electronics
- lateral housing for display and controller
- electric multi-piston hydraulic pump mounted in the oil tank
- pressure control valve
- liquid pressure transducer (DMS)
- dimensions: 1150 x 605 x 1495 mm
- weight approx: 930 kg
- voltage: 230 Volt, 50 Hz, 1.5 kW



Technical Data - Digital Controller

- capacitive and robust 7" touch display
- PID-controller with DSP processor
- measuring- and control cycle 2 kHz
- transmission of measured value up to 1 kHz
- freely programmable test sequences
- real-time display of the measuring channels as well as of the specimen strengths and test speed
- authorization model with different role and access authorizations (tester, laboratory manager, service technician, administrator)
- automatic and manually zero-adjustment
- adjustable break detection
- adjustable piston back-travel time
- specimen storage for test results
- USB port for data export
- Ethernet connection for communication with PC software

Accessories and Options:

- Ⓐ auxiliary platen hardened, face-ground to place on the pressure plate dimensions + weight:
210 x 210 x 110 mm, 38 kg
170 x 170 x 50 mm, 12 kg
120 x 120 x 50 mm, 5.65 kg
- Ⓑ spacing blocks, unhardened, face-ground, to place between pressure platen and piston, fixing by a dowel pin dimensions + weight:
Ø 227 x 100 mm, 32 kg
Ø 227 x 50 mm, 16 kg
- Ⓒ centering device for auxiliary platen
- Ⓓ compression device DV 1000 for drill cores
- Ⓔ test software **PROTEUS^{MT}**



FORM+TEST Seidner & Co. GmbH
Zwiefalter Str. 20 • D-88499 Riedlingen

+49 (0) 7371 9302-20 • -99
www.formtest.de
sales@formtest.de